

服务热线: 400-826-1123  
SERVICE HOTLINE



扫描二维码  
关注宏大电梯门户网站

宁波宏大电梯有限公司  
NINGBO HOSTING ELEVATOR CO., LTD.

地址: 浙江省宁波市鄞州区东吴镇

销售热线: 0574-88378555

传真: 0574-88489106-201

邮箱: hd@nbxd.com

网址: www.hosting-china.com

Address: Dongwu Town Yinzhou District, Ningbo City, Zhejiang Province

Sales hotline: +86-574-88336262

Fax: +86-574-88336161

Email: inquiry@nbxd.com

Web site: www.hosting-elevator.com

本书为一般信息类出版物,我们保留随时更改产品设计和说明的权利。所有图片和颜色可能与实物有所不同,请以实物为准。宁波宏大电梯版权所有

This manual is an ordinary information publication. We reserve the right to change our product design and instructions at any time. All the pictures and colors may be different slightly from the reality. The reality shall prevail in this case. All Rights Reserved by Ningbo Hosting Elevator Co., Ltd.

2020年11月版

HOSTING



全新一代HD2000  
让建筑与未来同行





多元创新

价值出众

MULTIPLE INNOVATION

OUTSTANDING VALUE



EMAC系列电梯适用于各类住宅、商务楼、酒店  
The EMAC series of elevator is suitable for kinds of houses, business buildings and hotels

额定载乘人数(人) Rated persons	额定载重(kg) Rated load	额定速度(m/s) Rated speed
5	400	10/16
8/21	630/1600	10/16/175
10/11/13/14/18	800/825/1000/1050/1350	10/16/175/2.0

**结构优化**  
现代建筑空间寸土寸金，宏大优化结构设计，最大程度释放建筑空间，为建筑增值。

**Structure optimization**  
The modern architectural space is very precious, with the optimization of structural design conducted by HOSTING, the architectural space is released at the maximum extent, and the value is added to the building.

**安全升级**  
不囿于提升电梯品质，更运用物联网、大数据等升级电梯安全系统，守护乘梯安全。

**Security upgrading**  
Not limited to improving the elevator quality, and also the elevator security system is upgraded by using the internet of things, big data, etc., to protect the safety of the ride.

**人性科技**  
化智能科技为人性体验，创造舒适便捷的乘梯体验，同时，让客流管理更轻松。

**Humanized science and technology**  
The intelligent technology is the humanized experience, the comfortable and convenient riding experience is created, at the same time, the passenger flow management is made to be easier.

**美学主义**  
性能之上，我们亦关注片刻间的视觉感受，采用美学主义设计，精致细腻，美不胜收。

**Aestheticism**  
On top of the performance, we also focus on the visual feelings for a moment, adopting aesthetic design. It is exquisite, delicate and beautiful.



# 优化设计 最大化空间价值

## OPTIMIZATION DESIGN MAXIMIZING SPACE VALUE

### 小机房结构

小机房电梯结构紧凑,灵敏可靠,减小电梯占用建筑空间的同时,扩大轿厢空间大幅,实现空间利用最大化,降低使用成本,同时优化顶部空间,实现楼宇空间的高效利用。

### Small machine room structure

The elevator structure with the small machine room is compact, sensitive and reliable, not only is the elevator occupancy building space reduced, the car space expanded, the use of space maximized, the cost of use reduced, but also the top space is optimized, and the efficient use of building space is realized.

### 俯仰新高度

轿厢高度提升至2.5米,从而提升轿厢空间宽敞度,创造奢华完美的空间体验,提高骑行舒适度。

### New height of elevation

The height of the car is raised to 2.5 meters, and thus the car space spaciousness is improved, a luxurious and perfect space experience is created, and the comfort of riding is increased.

### 节省井道纵向空间

小机房设计,占用空间仅为传统机房的25%,有效降低顶层高度300-500mm,降低底坑深度100-300mm,提升井道内空间利用效率。

### Saving the vertical space of the shaft

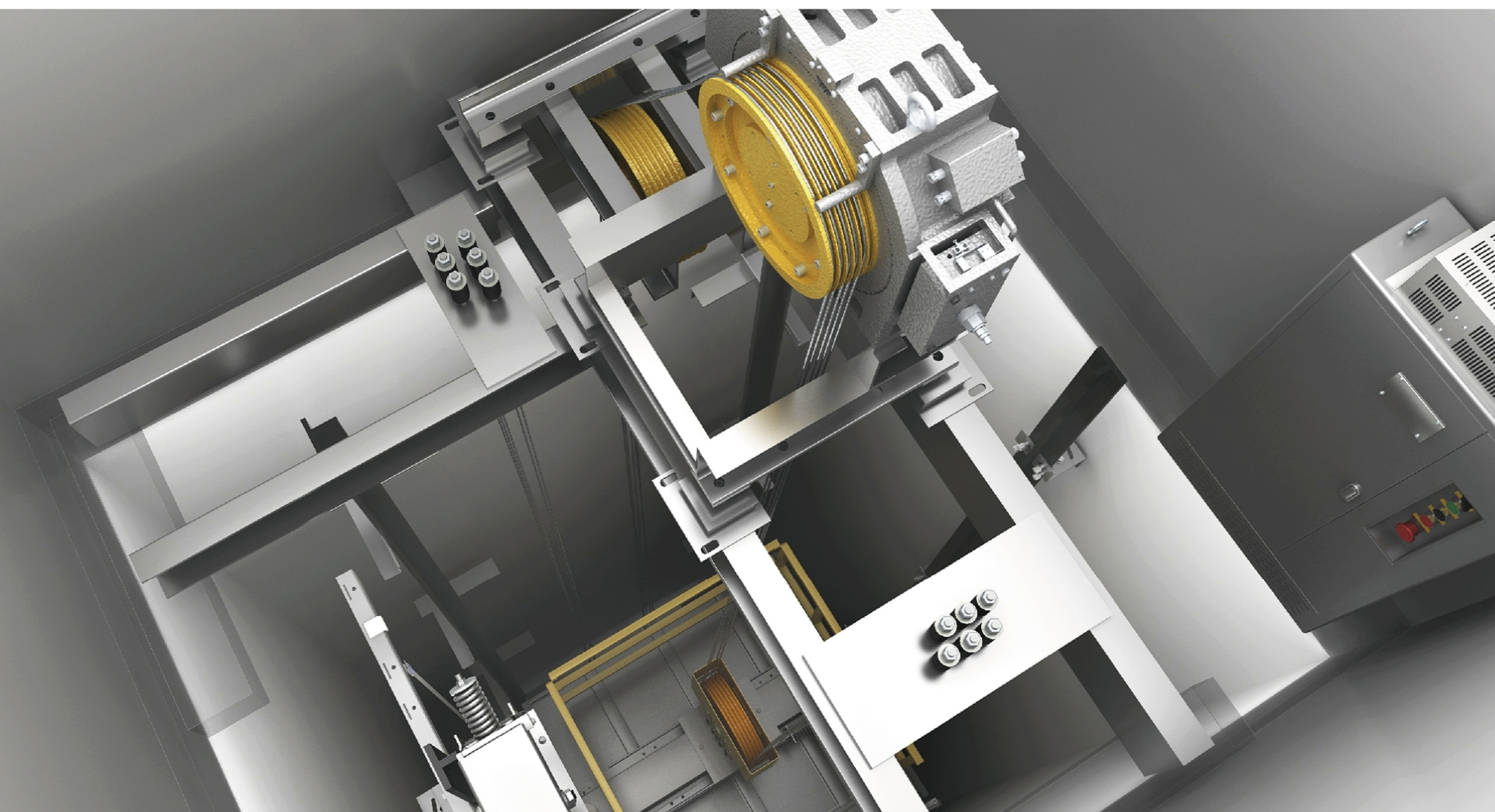
The design of small machine room occupies only 25% of the space of traditional machine room, the overhead height is effectively reduced by 300-500mm, the pit depth is reduced by 100-300mm, and the utilization efficiency of the shaft space is improved.

### 灵活布局

充分考虑建筑结构及人群使用需求,灵活调整开门方式,从细节处为您考虑更多。

### Flexible layout

The building structure and the use needs of passengers are fully considered, the way to open the door is flexibly adjusted, more are considered from the details for you.



STRUCTURAL  
DESIGN





# 守护安全 守候每次安心出行

PROTECTION OF SECURITY  
MAINTAINING EVERY SAFE TRIP

COMPREHENSIVE  
SECURITY

## 物联网远程监控

通过建立统一的实时监控平台,监控电梯每个时刻的运行数据,可以实现远程监控、远程测试、紧急报警、智能安抚等功能。

## IoT remote monitoring

Through the establishment of a unified real-time monitoring platform, the operation data of the elevator at each moment are monitored, the remote monitoring, remote testing, emergency alarm, intelligent pacification and other functions can be realized.

## 轿厢无菌化技术

轿厢内设置紫外线杀菌灯、新风系统,无人状态下自动启动紫外线杀菌,时刻保持轿内空气洁净,并配备抗菌按钮,创造无菌环境,呵护乘客安全。

## Sterile technology of elevator car

The car is equipped with the ultraviolet sterilization lamp and fresh air system, which will automatically start the ultraviolet sterilization when no one is in the car, keep the air in the car clean at all times, and equipped with the antibacterial button to create a sterile environment and protect the safety of passengers.

## 轿厢防意外移动系统 (UCMP)

当电梯处于开门状态下,电梯出现意外移动,防意外移动系统自动启动保护,制停轿厢。

## Unintended Car Movement Protection (UCMP)

In the state of opening the door, if the elevator moves unintentionally, the anti-unintended movement protection will start automatically and stop the car.

## 停电应急平层

电梯运行期间突发停电,如电梯未处于平层位置,停电应急救援系统将自动启用充电备用电源,控制电梯运行至平层位置,并打开电梯门;如电梯处于平层位置,系统将控制电梯打开电梯门,确保乘客安全离开轿厢。

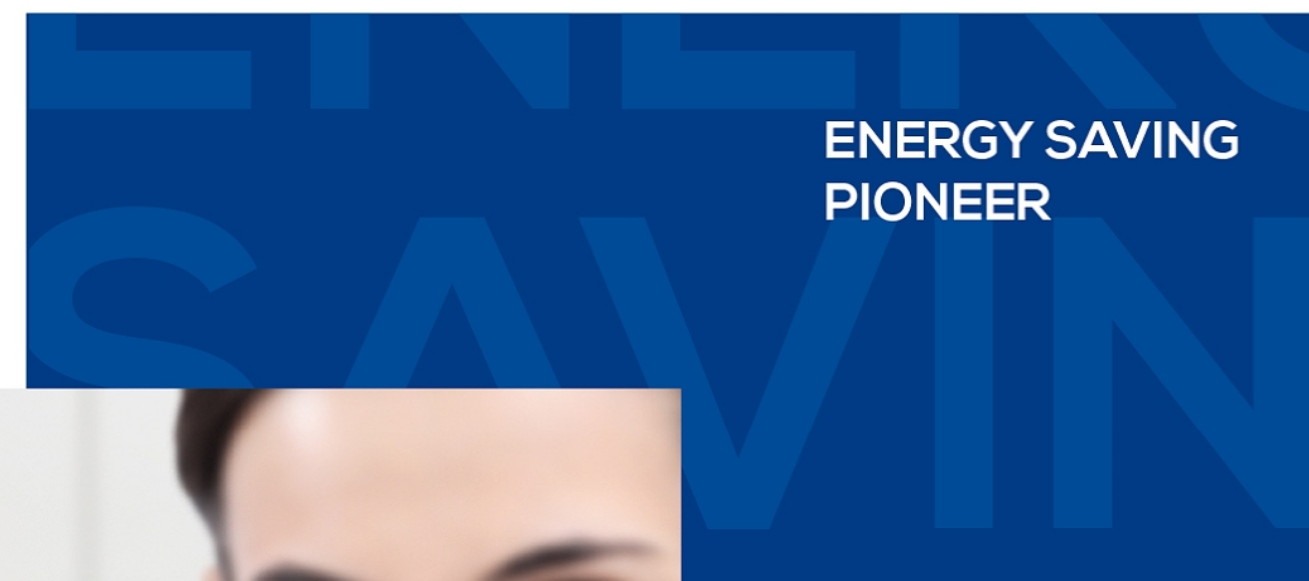
## Emergency leveling when power failure

When sudden power failure happens during elevator operation, if the elevator is not in the leveling position, the emergency rescue system will automatically activate the charging standby power supply, controlling the elevator to run to the leveling position and open the elevator door; if the elevator is in the leveling position, the system will control the elevator to open the elevator door to ensure that passengers leave the car safely.



# 绿色方案 绿动美好生活未来

GREEN SOLUTION  
DRIVE TO THE GREEN GOOD LIFE



## 永磁同步曳引机

永磁同步无齿轮曳引机无需复杂的润滑系统,彻底解决了传统曳引机漏油造成的环境污染问题,实现绿色免维护。

## Permanent magnet synchronous traction machine

The permanent magnet synchronous gearless traction machine does not need the complicated lubrication system, which completely has solved the environmental pollution problem caused by the oil leakage of traditional traction machine, and the green maintenance-free is realized.

## 可再生能源变频技术

智能切换能量回馈模式和能量消耗模式,将系统产生的电能以清洁能源的方式反馈到供电网络,实现部分电能的友善循环。

## Renewable energy frequency conversion technology

The intelligently switching between the energy feedback mode and energy consumption mode is conducted; the electric energy generated by the system is fed back to the power supply network in the way of clean energy, so as to realize the friendly circulation of part of the electric energy.

## 智能休眠节能

内置智能待机功能,可在空载状态下电梯将自动进入休眠模式,避免不必要的电能消耗。

## Intelligent sleep and energy saving

By using the built-in intelligent standby function, the elevator will be made automatically to enter the sleep mode under no load state, the unnecessary energy consumption is avoided.

## 一级能耗标准

所有产品运行能耗等级同步国际先进水平,是业内为数不多的节能典范。

## First grade energy consumption standard

The energy consumption grade of all product operations synchronizes with the international advanced level, which is one of the few energy-saving models in the industry.



# 智能科技 高效输送便捷管理

## INTELLIGENT TECHNOLOGY EFFICIENT DELIVERY & MANAGEMENT

### IC卡客户管理

将IC卡和目的层群控系统关联起来,乘客刷卡后,电梯将直接运载客户至卡内预置指定楼层,无需经过操纵箱及外呼,降低操作复杂性,并加强楼宇管理安全性。

### IC card customer management

The IC card is connected with the destination floor group control system, after the passenger swipes the card, the elevator will directly carry the customer to the preset designated floor without the need for going through the COP and HOP, the operation complexity is reduced and the building management safety is enhanced.

### 智能呼梯

提供智能语音呼梯、二维码呼梯、人脸识别呼梯等无接触乘梯方案供客户选择,助力健康出行。

### Intelligent call

The intelligent voice call, QR code call, human face identification call, and other contactless taking-elevator solutions are provided for the customers to choose, promoting healthy travel.

### 目的层选择

根据客流量和目的楼层进行定制,加快乘客选层速度和选层效率,便于乘客快速到达目的楼层。

### Destination floor selection

The customization is conducted according to the passenger flow and destination floor, the speed and efficiency of floor selection by the passenger are accelerated, so that the passengers can quickly arrive at the destination floor.

INTELLIGENT  
TECHNOLOGY





## 标配轿厢

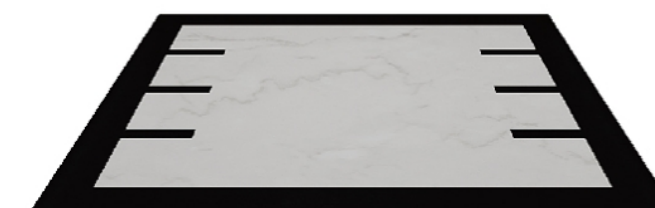
### STANDARD CAR

吊顶:NPD-1429镜面不锈钢框架+  
亚克力+LED筒灯  
轿壁:发纹不锈钢  
轿厢前壁:发纹不锈钢  
地面:NHD-1703(PVC)

Ceiling: NPD-1429 mirror stainless steel frame,  
acrylic, LED tube lamp  
Car walls: stainless steel  
Front car wall: stainless steel  
Floor: NHD-1703(PVC)



NPD-1429



NHD-1703



# 选配轿厢

## OPTIONAL CAR



### HD-2101

吊顶:NPD-1705 镜面不锈钢边框+亚克力板+LED筒灯  
轿壁:发纹蚀刻不锈钢后中壁+发纹不锈钢轿壁  
轿门:发纹不锈钢  
地面:大理石NHD-1417

Ceiling: NPD-1705 mirror stainless steel frame+ acrylic plate+LED tube lamp  
Car walls: Mirror etching stainless steel back middle wall+ stainless steel car wall  
Car door: Stainless steel  
Floor: Marble NHD-1417



### HD-2103

吊顶:NPD-2014 镜面不锈钢边框+亚克力照明  
轿壁:镜面蚀刻不锈钢后中壁+发纹不锈钢轿壁  
轿门:发纹不锈钢  
地面:大理石NHD-1409

Ceiling: NPD-2014 mirror stainless steel + Acrylic lighting  
Car walls: Mirror etching stainless steel back middle wall+ stainless steel car wall  
Car door: Stainless steel  
Floor: marble NHD-1409



### HD-2102

吊顶:NPD-1429 镜面不锈钢边框+亚克力板+LED筒灯  
轿壁:镜面蚀刻不锈钢后中壁+发纹不锈钢轿壁  
轿门:发纹不锈钢  
地面:大理石NHD-1418

Ceiling: NPD-1429 mirror stainless steel frame+ acrylic plate+LED tube lamp  
Car walls: Mirror etching stainless steel back middle wall+ stainless steel car wall  
Car door: Stainless steel  
Floor: marble NHD-1418



### HD-2104

吊顶:NPD-2005 镜面不锈钢边框+亚克力板+LED筒灯  
轿壁:镜面蚀刻不锈钢后中壁+发纹不锈钢轿壁  
轿门:发纹不锈钢  
地面:大理石NHD-1416

Ceiling: NPD-2005 mirror stainless steel + acrylic plate+LED tube lamp  
Car walls: Mirror etching stainless steel back middle wall+ stainless steel car wall  
Car door: Stainless steel  
Floor: marble NHD-1416



# 人机界面

## MAN-MACHINE INTERFACE



### 可选显示器 Optional Display



PB1038  
彩色液晶可变图片显示  
7寸竖式  
Color LCD variable picture display  
7 inch vertical



PB1039  
彩色液晶可变图片显示  
7寸横式  
Color LCD variable picture display  
7 inch horizontal



PB1040  
彩色多媒体液晶显示  
10.1寸横式  
(适用于一体式操纵箱)  
Color multimedia LCD display  
10.1 inch horizontal  
(for integrated COP)



PB1014  
彩色多媒体液晶显示  
10.1寸横式  
(适用于一体式操纵箱)  
Color multimedia LCD display  
10.1 inch horizontal  
(for integrated COP)

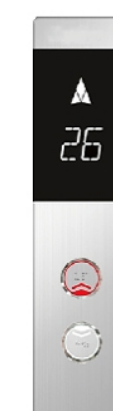
### 可选外呼 Optional HOP



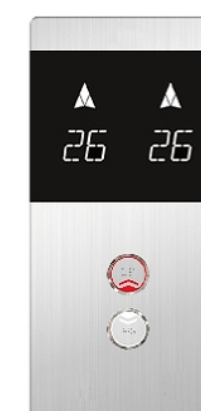
HOP-20  
(有底盒)  
with bottom box



HOP-20 并联  
(有底盒)  
duplex  
with bottom box



HOP-21  
(无底盒)  
no bottom box



HOP-21 并联  
(无底盒)  
duplex  
no bottom box



PB1036  
蓝底白字液晶显示  
Blue and white  
LCD display



PB1035  
白光点阵显示  
White light dot  
matrix display



PB1018  
彩色液晶显示  
Color LCD display

显示: PB1041 白光段码显示  
按钮: PB2020  
(标配红白双色按钮)  
面板材料: 发纹不锈钢

Display: PB1041 White light segment display  
Button: PB2020  
(Standard button: red and white light)  
Faceplate material: Hairline stainless steel

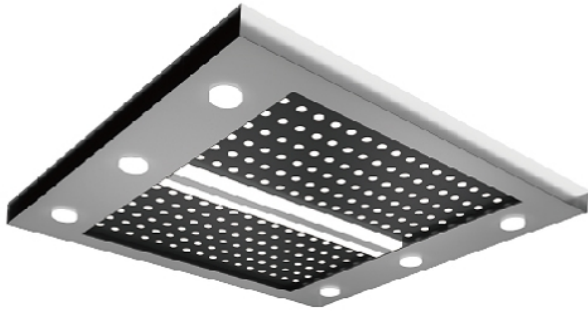


轿厢装潢

CAR  
DECORATION

可选吊顶  
Optional Ceiling

可选地板  
Optional Floor



NPD-2004  
镜面不锈钢  
Mirror stainless steel



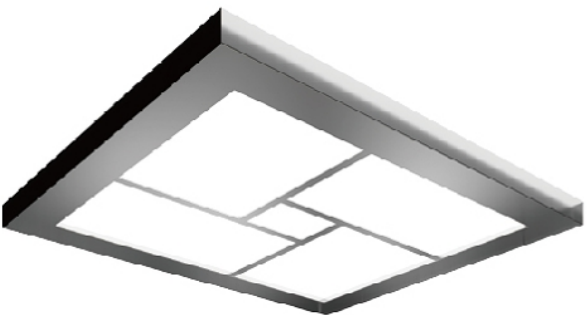
NPD-1412  
镜面不锈钢  
Mirror stainless steel



NPD-1423  
镜面不锈钢  
Mirror stainless steel



NPD-1404  
镜面不锈钢  
Mirror stainless steel



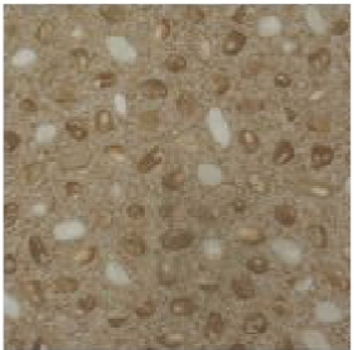
NPD-2013  
镜面不锈钢  
Mirror stainless steel



NPD-1413  
镜面不锈钢 (仅担架梯适用)  
Mirror stainless steel  
(Only for bed elevator)



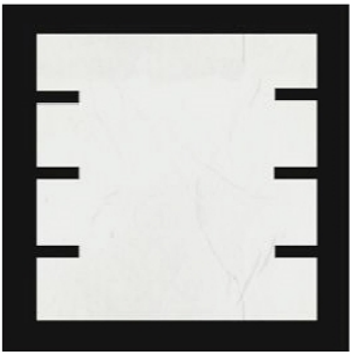
NHD-1405  
PVC



NHD-1701  
PVC



NHD-1702  
PVC



NHD-1416  
大理石  
Marble



NHD-1418  
大理石  
Marble



NHD-1902  
PVC

可选扶手  
Optional Handrail

可选喷塑颜色  
Optional Spray Color



NHD-313F



NHD-301J



NHD-311J



RAL7024



RAL7030



RAL7035



# 配置说明

## CONFIGURATION INSTRUCTIONS

### 基本功能

#### 运行功能

集选控制 (ATC)	电梯对大楼内上、下召唤信号、轿内选层指令及各种信号进行综合分析判断后，将自动优选与电梯运行方向一致的信号进行依次应答，然后再反向应答。
司机控制 (SNC)	可通过轿厢操纵箱内专用司机开关来选择司机控制功能，由电梯司机关门启动电梯运行。
满载直驶 (FL-NP)	当轿厢内载荷达到满载预设值时，即进入满载直驶状态，电梯将不再应答厅外召唤信号而直接响应轿内指令直达指定楼层。
本层厅外开门 (CFL-O)	在正常关门过程中，厅外与电梯同向的召唤按钮被按下时，电梯将重新开门。
层高自动测定 (EH-MS)	电梯可自动检测建筑物的楼层高度，并根据此数据来控制电梯的加减速和平层。
厅门、轿门时间分别控制 (LDT)	通过调整电梯在响应召唤和轿内指令时的开门保持时间，来提高整体的运行效率。
轿内误指令消除 (IER-CL)	当指令登记后，在电梯未起动前可通过连续点按此按钮以取消已登记的指令。电梯起动后，为保证乘客的人身安全，系统不允许取消已登记信号。
反向指令自动消除 (RINS-CL)	当电梯响应完同一方向的所有指令后，自动消除尚存的轿内指令，避免电梯的无效运行。
速度分时运行功能 (NR)	电梯按系统预设的时间和预设的运行速度运行，可降低特定时间电梯运行噪音。
直接停靠 (D-STOP)	系统以距离为原则，按预设的运行曲线直接停靠到平层位置。

#### 安全功能

超载保护 (OV-PT)	当电梯超载时，电梯轿厢不关门，电梯不能启动。
超载报警 (OV-AL)	当轿厢内的载重量超出额定允许的载重时，超载蜂鸣器会鸣响，轿内超载显示，以提示乘客。
超速保护 (OS-PT)	在电梯意外情况下超过额定速度运行时会自动切断控制电源，如电梯速度继续加快，电梯将在切断控制电源的同时操纵机械保护装置强制电梯停止，确保安全。
光幕保护 (DC-PT)	专用光幕门保护系统增加了电梯的安全性，系统可在电梯门口形成密集的红外光束，对于任何进入其探测区域的人或物体都能做出敏锐的反应，为进出的乘客带来最大的安全保护。
运行时间保护 (MFR-PT)	因轿厢或对重被卡住导致曳引绳打滑或电梯启动时曳引轮不转超过安全标准规定时间后，电梯将自动停止运行且保持停止状态，并只能断电复位。
关门受阻保护 (DCP-PT)	当超过预定关门时间后电梯门还未关闭，则自动转换为开门状态。
位置异常自动校正 (EP-AD)	当系统记忆的电梯位置和电梯的实际位置不符时，电梯将自动返回底层进行校正。
故障自动检测和存储 (ER-REC)	电梯可自动检测出故障发生的原因和故障发生时的状态并进行存储，以方便维修保养工作。
抱闸监控功能 (BFC)	对制动器信号进行全程监控，当发现制动器的实际状态与给定的命令不符时，系统将停止电梯的运行。
手动盘车保护功能 (HS-PT)	带可拆卸盘车手轮的电梯，手轮未从主机上拆下时，电梯将不允许启动。
接触器反馈检测功能 (CFB)	无论电梯处于待机状态还是运行状态，系统将检测输出接触器的状态，一旦发现接触器处于非正常状态时，系统将停止电梯的运行。
终端楼层保护 (ETS-PT)	当电梯运行到终端楼层时，运行速度没有减至预设值时，系统将强迫减速，保护电梯的安全运行。
检修操作 (INS)	电梯装有检修操作装置，该装置可以控制电梯运行慢速点动运行，使检修维护更为安全快捷。
五方通话 (TR-TL)	电梯在紧急情况时，可通过在轿厢、轿顶、底坑、机房和值班室之间实现语音通话。
门锁旁路强制检修功能 (SPL)	控制柜内自带门锁旁路功能，当门锁短接旁路时，系统自动强制进入检修模式，保证电梯安全。
轿厢意外移动保护 (UCMP)	防止在层门未被锁住且轿门未关闭的情况下，由于轿厢安全运动所依赖的驱动主机或驱动控制系统的任何单一元件失效引起轿厢离开层站的意外移动。
独特的蜂鸣提示功能 (AB-P)	检修转正常运行前蜂鸣提示功能、检修上下行操作运行前蜂鸣提示功能、故障蜂鸣提示功能。

#### 特殊运行功能

自动返基站 (BBA)	当电梯在预定时间内无轿内指令或外召信号时，电梯将自动返回基站，关门待机，方便乘客使用电梯。
自动泊梯 (PRK)	群控或单台电梯均处于空闲状态时，会自动返回到预设的泊梯层。
消防返回 (FB)	大楼发生火灾时，系统在接收到火警信号后，将取消所有指令和召唤信号，驱动电梯直接返回消防层，开门疏散乘客，等待消防员操作。
故障低速自救功能 (FLS)	当电梯处于非检修状态下，且未停在平层区，此时只要符合起动的安全要求，电梯将自动以慢速运行至平层区，开门疏散乘客。
开门异常手动选层自救功能 (DF-HS)	电梯到站平层后轿门不能完全打开，通过手动选层可到达其它层后进行开门自救。
呼梯按钮卡死自动报警提示和屏蔽功能 (AB-AS)	当呼梯按钮长时间动作，本层轿内蜂鸣器报警、该按钮指示灯闪烁，如仍发生卡死现象，系统自动屏蔽该指令信号。
门锁故障自动修正和屏蔽功能 (DF-R)	当电梯正常运行到某一层开门，系统检测到门锁回路异常（门打不开或者门锁检测时序异常）的情况下，系统自动再次输出开关门信号进行修正，如修正不了自动运行至就近层换层修正，如仍有问题，那么对应楼层呼梯信号自动屏蔽，并报警。
保养提示功能 (PM)	通过显示器维保字符自动提醒功能，保证电梯安全可靠运行。
消防迫降反馈 (FBR)	在消防迫降成功后，向消防控制中心提供迫降成功的信号。

#### 人机界面

到站钟 (BAR)	在轿厢顶部装有到站钟，电梯到站停靠楼层时会发出清脆的铃声来提示乘客电梯已到站。
运行次数显示 (RM-REC)	电梯自动记录运行次数，可作为电梯使用情况和维修保养的参考依据。
运行时间显示 (RT-REC)	电梯自动记录运行时间，可作为电梯使用情况和维修保养的参考依据。
轿内及厅外数码显示 (LED-REC)	在轿内的操纵面板及每一层的召唤盒上随时会用数码来显示电梯所在层站，以方便乘客了解电梯当前的运行位置。
轿内及厅外方向指示 (DIR-REC)	为方便乘客了解电梯的运行方向，在轿内操纵面板和厅外召唤面板上有箭头状指示灯提示电梯的运行方向。
检修状态提醒显示 (INSL)	电梯进入检修状态时，会在厅外显示状态信息。
轿内到站显示功能 (LED-TF)	电梯到站时，轿内显示楼层信息闪烁来提醒轿内乘客电梯已到站。

### Basic Function

#### Operating function

Set selection control (ATC)	The elevator to make comprehensive analysis and judgment level instruction and various signal to the building up and down in the call signal, the car after the election, will signal automatic selection and elevator running direction. In order to carry out response, then reverse response.
Driver control (SNC)	The driver's control function can be selected by the special driver switch in the car control box.
Full load bypass (FL-NP)	When the car is in full load reaches the preset value, enter the full rest state, the elevator hall call signal will no longer response and direct response car instruction to the designated floor.
Open door (CFL-O)	In the normal closing process, the hall and elevator with the same call button is pressed, the elevator will reopen.
Automatic height measurement (BH-MS)	The elevator can automatically detect the floor height of the building, and control the acceleration and deceleration of the elevator according to the data.
Hal door, car door time control (LDT)	The overall operating efficiency is improved by adjusting the opening time of the elevator in response to the call and the inner command.
In order to eliminate the internal error of the car (IER-CL)	When the command is registered, the button can be pressed by the continuous point before the elevator is started to cancel the registered instruction. After the start of the elevator, in order to ensure the safety of passengers, the system is not allowed to cancel the registered signal.
Reverse instruction automatic cancellation (RINS-CL)	When the elevator responds to all instructions in the same direction, it can automatically eliminate the remaining internal instructions to avoid the invalid operation of the elevator.
Speed time sharing function (NR)	According to the preset time and the running speed, the elevator can reduce the noise of the elevator.
Direct docking (D-STOP)	The system is based on the principle of distance, which is directly docked to the flat position according to the preset operation curve.

#### Security function

Overload protection (OV-PT)	When the elevator overload, the elevator car is not closed, the elevator can not start.
Overload alarm (OV-AL)	When the car load beyond the load rated allowed, the buzzer will ring in the elevator overload, overload the display to remind passengers.
Over speed protection (OS-PT)	In the elevator accident case exceeds the rated speed will automatically cut off the control power, such as the lift rate continues to accelerate, the elevator will also cut off the control power steering mechanical protection device to ensure the safety of compulsory elevator stops.
Screen protection (DC-PT)	The screen door system of special protection to increase the safety of the elevator, the system can form a dense infrared beam in the elevator door, enter the detection area for any person or object can make a sharp response, bring maximum safety protection for the import of passengers.
Run time protection (MFR-PT)	Because the car is stuck or lead to heavy traction rope slipping or lift at the start of the traction wheel does not turn over safety standards after the specified time, the elevator will automatically stop running and stop state, and only the power reduction.
Shut down protection (DCP-PT)	When the elevator door is not closed after the scheduled closing time, the door is automatically converted to a state.
Automatic position correction (EP-AD)	When the elevator position of the system memory does not match the actual position of the elevator, the elevator will automatically return to the bottom to correct.
Automatic fault detection and storage (ER-REC)	Elevator can automatically detect the cause of the fault and the state of the fault occurred and stored in order to facilitate maintenance work.
The brake control function (BFC)	The whole process of the brake signal monitoring, when the actual state of the brake and the given command does not match, the system will stop the operation of the elevator.
Manual turning protection function (HS-PT)	Elevator with detachable disc driver wheel, hand wheel is not removed from the host, the elevator will not be allowed to start.
Contactors feedback detection (CFB)	Regardless of whether the elevator is in standby or running state, the system will detect the state of the output contactor, the system will stop the operation of the elevator when the contactor is found to be abnormal.
Terminal floor protection (ETS-PT)	When the elevator runs to the terminal floor, the operating speed is not reduced to the preset value, the system will be forced to slow down, to protect the safe operation of the elevator.
Overhaul operation (INS)	The elevator is equipped with the overhaul operation device, the device can control the elevator to carry out the slow point operation, so that the maintenance is more safe and quick.
Five party calls (TR-TL)	When the elevator is in an emergency, it can realize the voice communication between the car, the car roof, the bottom pit, the engine room and the duty room.
Door lock bypass function (SPL)	The control cabinet is provided with a door lock bypass function, and when the door lock is connected with a bypass, the system automatically forces the maintenance mode to ensure the safety of the elevator.
Car accident protection (UCMP)	To prevent accidental movement of the car leaving the station due to the failure of any single element of the drive or drive control system that is dependent on the safety movement of the car in the event that the door is not locked and the door is not closed.
Unique beep prompt function (AB-P)	Before and after the operation of the normal operation of the beep beep function, check up and down operation before the beep beep prompt function, malfunction beep prompt function.

#### Special operation function

Automatic return base station (BBA)	When the elevator does not have an internal command or an external call signal in a predetermined time, the elevator will automatically return to the base station, and the door will be closed for passengers to use the elevator.
Automatic parking ladder (PRK)	Group or single elevator are in the idle state, will automatically return to the default layer ladder bo.
Fire return (FB)	When a fire alarm occurs in the building, the system will cancel all the instructions and the call signal after receiving the fire alarm signal.
Fault low speed self saving function (FLS)	When the elevator is in the state of non maintenance, and did not stop in the flat area, at this time as long as the safety requirements of the start, the elevator will automatically run at a slow level to the flat area, open the door to evacuate passengers.
Open door abnormal manual layer selection function (DF-HS)	The elevator can not be fully opened after reaching the flat floor, and then the door can be opened by manual selection.
Automatic alarm and shielding function (AB-AS)	When the call button button for a long time, the car alarm buzzer, the button lights flashing, such as the phenomenon is still stuck, the system automatically shielded the command signal.
Door lock automatic correction and shielding function (DF-R)	When the normal operation of the elevator to a layer to open the door, the system detects abnormal door lock loop (the door will not open or lock detection timing anomalies) under the condition of the system automatically open and close the door again output signal is corrected, such as correction can not automatically run to the nearest layer for layer correction, as there are still problems, then the corresponding floor call signal automatic alarm and shielding.
Maintenance prompt function (PM)	Automatic reminding function through the monitor maintenance characters, ensure safe and reliable operation of the elevator.
Fire feedback (FBR)	In the fire after the success of the successful landing of the signal to the fire control center.

#### Interface

Arrival clock (BAR)	At the top of the car is equipped with the arrival bell, the elevator stops at the floor will be issued a ringing bell to remind passengers that the elevator has arrived.
Run times display (RM-REC)	The number of elevator automatic recording operation can be used as reference for the use and maintenance of the elevator.
Run time display (RT-REC)	Elevator automatic recording running time, can be used as a reference for the use and maintenance of the elevator.
Inside and outside the Hall digital display (LED-REC)	In the car's control panel and each layer of the call box will be used to show the elevator at any time the floor of the station, so as to facilitate the passengers to understand the current position of the elevator.
Interior and exterior direction indicator (DIR-REC)	In order to facilitate the passengers to understand the direction of the elevator operation, in the car control panel and the hall outside the call panel with arrow like indicator of the direction of the elevator operation.
Maintenance status reminder display (INSL)	When the elevator enters the maintenance state, it will display the status information outside the hall.
Car interior display function (LED-TF)	When the elevator arrives at the station, the floor information is displayed in the car to remind the passenger in the car to arrive.



# 配置说明

## CONFIGURATION INSTRUCTIONS

### 基本功能

#### 应急功能

报警装置 (ALR)	在特殊情况下，乘客可以持续按下操纵箱上的报警按钮及时通知外界，方便求援。
应急照明 (URG-L)	轿厢内设置的应急照明灯，供停电时自动点亮。
轿厢警铃 (BELL)	在特殊情况下乘客通过按动轿厢内报警按钮，及时通知外界。
机房紧急电动运行 (ERO)	电梯机房的控制柜内设有紧急电动操作装置，可用来紧急情况时的救援。

#### 节能功能

轿内照明自动控制 (LAC)	在没有接到任何操作指令的情况下，电梯在关门后的预定时间内，将进入节能模式，切断轿内的照明电源。
轿内风扇自动控制 (FAC)	在没有接到任何操作指令的情况下，电梯在关门后的预定时间内，将进入节能模式，切断轿内的风扇电源。
停止服务锁 (KSS)	当设置在指定楼层的停止服务锁开关动作后，电梯将在应答完所有指令后返回指定层楼，同时将启用节能模式，切断轿内照明及风扇电源。

### 选配功能

#### 运行功能

并联控制 (PAR-C)	两台电梯通过数据的交换，自动进行电梯的调配，协调响应层站召唤的功能，从而提高电梯的运行效率。
群控 (ENC)	3-8 台的电梯通过数据的交换，根据不同的交通要求智能地管理电梯进行高效运行。
消防运行 (FBS)	当消防运行开关启动后，电梯取消所有召唤信号，电梯只能应答轿内指令，配合消防员使用。
短层站运行 * (SFL-R)	当电梯的层站高度小于正常停靠所需的高度时，电梯将以慢速自动运行，确保正常停靠。
轿内空调 (ARC)	在轿内设置空调，使轿厢内的空气、温度、湿度、洁净度保持在人体舒适的范围之内，以提供更加舒适的乘梯环境。

#### 安全功能

安全触板保护 (MSS-PT)	利用反应可靠的机械式挡板为乘客出入轿厢提供安全保障。
-----------------	----------------------------

#### 特殊功能

提前开门 (DO-PR)	当电梯运行进入门区位置时，在符合安全的条件下，电梯会提前开门并低速蠕动运行至平层位置。
保安层功能 (FFP)	可指定经过特定层站时电梯必须停靠开门，进行电梯特定的交通权限控制。
强迫关门功能 (FCF)	当本层召唤按钮有卡住现象时，在某一层开门后，若轿门在超过规定的时间后轿门还是打开着，将输出强迫关门信号，迫使门机缓慢关门运行，同时蜂鸣器鸣叫，提醒乘客。
独立运行 (ISC)	为满足客户的特殊需要，设计了独立运行状态，当电梯进入独立运行状态后，电梯不再应答厅外召唤信号而只能由人工控制电梯的开关门和运行。
紫外光杀菌	杀菌系统通过对进入轿厢的空气进行消毒灭菌,对进入轿厢的空气达到有效的净化。
负氧离子杀菌	通过对轿厢通风系统增加负氧离子发生器,来制造活性氧离子,对空气具有杀菌及净化的作用,绿色健康。

#### 人机界面

智能语音提示 (VLB)	电梯会用语音提示即将停靠的层站数或该层站的信息、电梯运行背景音乐播放、电梯故障提醒功能。
身份 IC 卡识别控制 * (ID-C)	IC 卡管理功能通过轿内或厅外读卡系统对特定层楼进行权限管理，对人员出入电梯进行智能管理。
VIP 贵宾服务 (DGS)	当系统接收到 VIP 信号时，电梯就近平层、然后运行至贵宾服务层进行贵宾服务。

#### 应急功能

停电自动应急疏散 (EMG-R)	当电梯正常运行中突然断电急停时，该装置会迅速动作，驱动电梯低速运行至平层位置，然后开门疏散乘客。
地震操作 (EQO)	大楼发生地震时，系统在接收到地震信号后，将取消所有指令和召唤信号，电梯在最近层楼开门疏散乘客并停梯。（用户需提供地震动作信号）。

#### 节能功能

能量回馈 * (ERY)	将电机在调速过程中所产生的再生电能回馈到电网，最大程度的降低电能的损耗，起到节能作用。
轿内风扇智能控制 (FAN-IC)	通过专用温控装置对电梯轿内风扇运转速度进行智能调控，降低功耗达到节能效果。

#### 监控功能

轿内视频监视 (AVCC)	预留轿厢至机房的视频监视电缆，以方便监控中心对电梯轿内状况的监控。
远程监控系统 (TEL-C)	通过控制系统与监控中心电脑相连，配合专业监控软件，可以时事监控电梯运行状况（开关门状态、指令登记情况、电梯超满载等）、记录电梯发生时的故障信息。
物联网功能 # (IOT)	通过外加通讯接口部件，在远程电脑后台上查看各电梯的运行状况、故障记录信息、维保档案和维保记录管理、实时故障和关人信息自动提示、大数据分析等相关功能。
底坑水位监测 # (WLM)	当系统监控到底坑积水超过安全警戒界时，电梯自动就近停靠并开门报警。
楼宇监控接口 # (LMO)	通过系统输出的信号与大楼管理系统相连接，可以显示电梯现在运行的状态。

注：

1. 加有“\*”号的选项，需要向工厂进行确认后，方可决定是否能向用户提供
2. 加有“#”号的选项，需向客户描述此功能，最终由客户确定是否加此项功

### Basic Function

#### Emergency function

Alarm device (ALR)	In special circumstances, passengers can continue to press the alarm button on the box to manipulate and timely inform the outside world, convenient for help.
Emergency lighting (URG-L)	Emergency lighting lamp arranged in the car, which can automatically turn on when the power is cut off.
Car alarm (BELL)	In the special case of the passengers in the car by pressing the alarm button, inform the outside world.
Computer room emergency electric operation (ERO)	An emergency electric operating device is arranged in the control cabinet of the elevator room, which can be used for emergency rescue.

#### Energy saving function

Car lighting automatic control (LAC)	In the absence of any operating instructions, the elevator in the scheduled time after closing, will enter the energy saving mode, cut off the lighting power supply.
Car fan automatic control (FAC)	In the absence of any operating instructions, the elevator in the scheduled time after closing, will enter the energy saving mode, cut off the fan power supply.
Stop service lock (KSS)	When the stop service lock switch action is set on the specified floor, the elevator will return to the designated floor after receiving all the instructions.

### Matching function

#### Operating function

Parallel control (PAR-C)	Two elevators through the exchange of data, automatic deployment of the elevator, coordinating the response to the call of the function of the station, so as to improve the efficiency of the elevator.
Group control (ENC)	3-8 station elevator through the exchange of data, according to the different requirements of the intelligent management of the elevator running efficiently.
Fire operation (FBS)	When the fire operation switch is started, the lift cancel all the call signal, the elevator can only respond to the instructions in the car, with the use of firefighters.
Short story station run * (SFL-R)	When the height of the elevator is less than the height of the normal stop, the elevator will run at a slow speed, so as to ensure normal operation.
Car air conditioning (ARC)	Set the air conditioner in the car, the car in the air, temperature, humidity, clean degree remains within the range of human comfort, in order to provide a more comfortable riding environment.

#### Security function

Safety contact plate protection (MSS-PT)	The use of reliable mechanical damper for passengers to enter and exit the car to provide security.
--	---

#### Special function

Opening the door (DO-PR)	When the elevator is running in the location of the door, in the condition of safety, the elevator will open the door ahead of time and slow peristalsis to run to the flat position.
Security layer function (FFP)	Can be specified when the elevator must be parked at a specific level of the station to open the door, elevator specific traffic control.
Forced closing function (FCF)	When the call button has stuck phenomenon, in a layer of the door, if the car door in the prescribed time after the car door is open, the closing output signal, forcing the door slowly closed machine operation, at the same time the buzzer chirping, remind passengers.
Independent operation (ISC)	In order to meet the special needs of customers, the design of the independent operation of the state, when the elevator into the independent operation of the state, the elevator is no longer outside the hall call signal only by the manual control of the elevator door and operation.
UV sterilization	UV Sterilization system clean the air into the cabin.
Negative oxygen ion sterilization	Add the negative oxygen ion generator to the ventilation system, produce active oxygen ions, which have the effect of sterilizing and purifying the air.

#### Interface

Intelligent voice prompt (VLB)	Elevator will be used to remind the voice of the number of stations to be docked or the level of the station information, the elevator running background music playback, elevator fault warning function.
ID card identification control * (ID-C)	IC card management function through the car or outside the office of the card reading system for a specific floor of the authority management, access to the elevator intelligent management.
VIP VIP service (DGS)	When the system receives the VIP signal, the elevator to the nearest level, and then run to the VIP service for VIP services.

#### Emergency function

Automatic emergency evacuation (EMG-R)	When the normal operation of the elevator suddenly power off, the device will act quickly, driving the elevator to the low speed to the flat position, and then open the door to evacuate passengers.
Seismic operation (EQO)	In the event of an earthquake in the building, the system will cancel all instructions and call signals after receiving the seismic signal. (users need to provide seismic action signal).

#### Energy saving function

Energy feedback * (ERY)	The regenerative energy generated by the motor during the speed regulation is fed back to the power grid, and the power consumption is reduced to the greatest extent.
Intelligent control of car inner fan (FAN-IC)	Through the special temperature control device to control the operating speed of the elevator car fan, reduce energy consumption and achieve energy saving effect.

#### Monitoring function

Car video surveillance (AVCC)	Reserve the video surveillance cable from the car to the engine room to facilitate the monitoring of the status of the elevator.
Remote monitoring system (TEL-C)	Connected by the control system and the monitoring center computer, with professional monitoring software, can monitor current running status of elevator (opening and closing state, instruction register, lift extremely heavy etc), record the fault information during the lift.
The function of # Networking (IOT)	Through the external communication interface, function of read operation, the lift on the remote computer background on fault record information, maintenance records and maintenance records management, real-time fault and closed information automatically prompts and big data analysis.
Pit water level monitoring # (WLM)	When the system monitoring end pit water over the security police, the nearest stop and lift automatic door alarm.
Building monitoring interface # (LMO)	The output signal of the system is connected with the building management system.

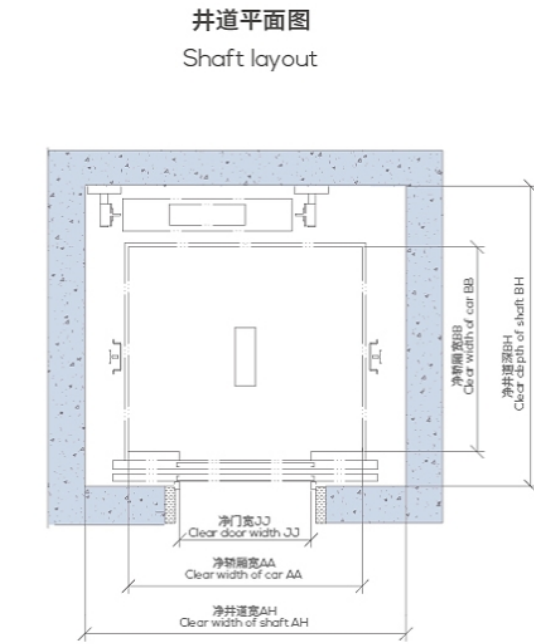
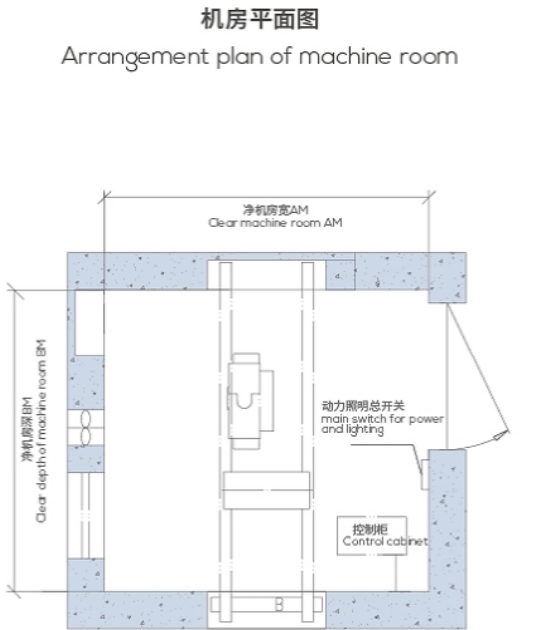
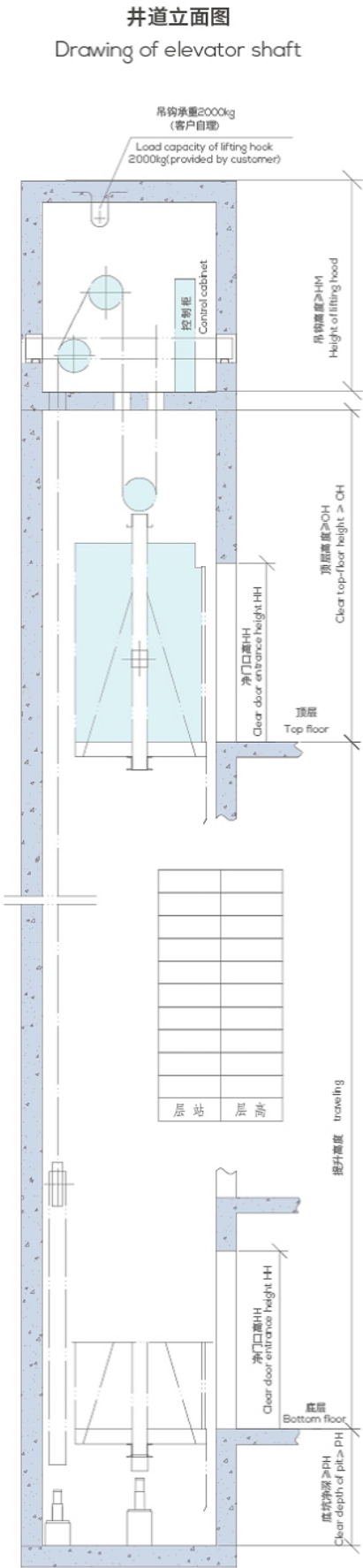
Note:

1. plus "\*" number of options, the need to confirm the factory before deciding whether to provide users with
2. with a "#" option to describe this function to the customer, and ultimately by the customer to determine whether the above work



土建参数

CONSTRUCTION  
PARAMETERS



额定载重 / 额定乘员	额定速度	轿厢规格		门规格		井道尺寸				机房尺寸		
(kg/ 人)	(m/s)	AA(mm)	BB(mm)	JJ(mm)	HH(mm)	AH(mm)	BH(mm)	PH(mm)	OH(mm)	AM(mm)	BM(mm)	HM(mm)
400/5	1.0	1000	1100	700	2100	1600	1700	≥ 1450	≥ 4050	1600	1700	≥ 2000
	1.6							≥ 1650	≥ 4250			
630/8	1.0	1400	1100	800	2100	2000	1700	≥ 1450	≥ 4050	2000	1700	≥ 2000
	1.6							≥ 1650	≥ 4250			
	1.75							≥ 1650	≥ 4300			
800/10	1.0	1400	1350	800	2100	2000	1950	≥ 1450	≥ 4050	2000	1950	≥ 2000
	1.6							≥ 1650	≥ 4250			
	1.75							≥ 1650	≥ 4300			
	2.0							≥ 1700	≥ 4400			
825/11	1.0	1400	1400	800	2100	2000	2000	≥ 1450	≥ 4050	2000	2000	≥ 2000
	1.6							≥ 1650	≥ 4250			
	1.75							≥ 1650	≥ 4300			
	2.0							≥ 1700	≥ 4400			
1000/13	1.0	1600	1400	900	2100	2200	2050	≥ 1450	≥ 4050	2200	2050	≥ 2000
	1.6							≥ 1650	≥ 4250			
	1.75							≥ 1650	≥ 4300			
	2.0							≥ 1700	≥ 4400			
1000/13 (担架梯)	1.0	1100	2100	900	2100	2100	2500	≥ 1450	≥ 4050	2100	2500	≥ 2000
	1.6							≥ 1650	≥ 4250			
	1.75							≥ 1650	≥ 4300			
	2.0							≥ 1700	≥ 4400			
1050/14	1.0	1600	1500	900	2100	2200	2150	≥ 1450	≥ 4050	2200	2150	≥ 2000
	1.6							≥ 1650	≥ 4250			
	1.75							≥ 1650	≥ 4300			
	2.0							≥ 1700	≥ 4400			
1350/18	1.0	2000	1500	1100	2100	2600	2150	≥ 1400	≥ 4350	2600	2150	≥ 2500
	1.6							≥ 1550	≥ 4550			
	1.75							≥ 1550	≥ 4550			
	2.0							≥ 1650	≥ 4650			
1600/21	1.0	2000	1750	1100	2100	2600	2400	≥ 1400	≥ 4350	2600	2400	≥ 2500
	1.6							≥ 1550	≥ 4550			
	1.75							≥ 1550	≥ 4550			



# 经典工程

## CLASSIC PROJECT



德州月亮湾  
Dezhou Moon Bay



河北张家口冠垣国际商业广场  
Commercial square in Zhangjiakou Hebei



成都幸福苑  
Happiness park in Chengdu



江苏德运广场  
Deyun square in Jiangsu



昆明医大馨苑  
Yida xin park in Kunming



潍坊银通社区  
Yintong community in Weifang



四川泸州江南新区  
Jiangnan New Area in Luzhou Sichuan



西安都市之窗CBD  
Urban window CBD in Xi'an



宝鸡千禧时代广场  
Millennium Times Aquare in Baoji



三门峡春天城  
Spring Park in Sanmenxia



宁波江南村  
Jiangnan village in Ningbo



宁波浦家兰庭  
Pujia park in Ningbo



云南大理滇西商务中心  
Business center in Dali Yunnan



甘肃山丹县清华园  
Tsinghua Yuan in Shandan Gansu



陕西聚兴桃源华府  
Juxing Taoyuan Mansion in Shanxi



成都明月锦苑  
Mingyue park in Chengdu



新疆哈密红星国际城  
Red Star International City in Hami Xinjiang